



Vertical Float

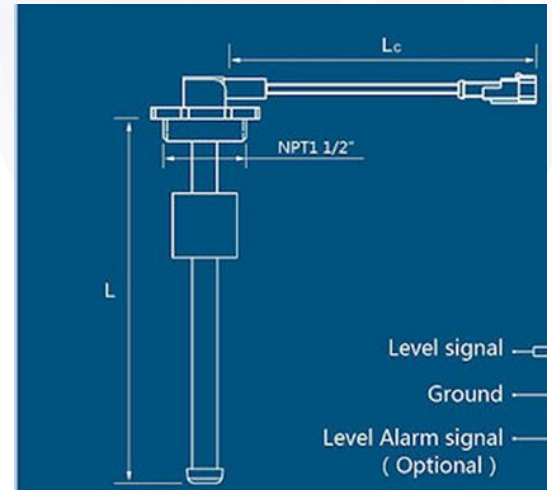
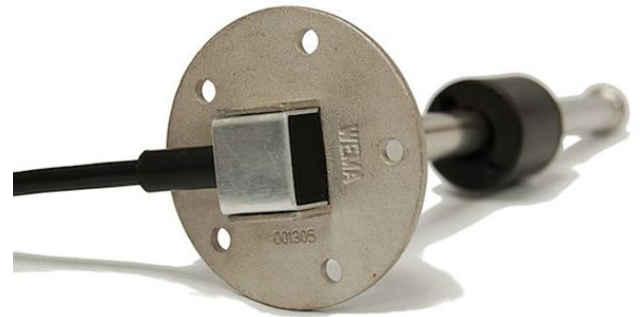
Level Sensor

Key Features

- Magnetostrictive Continuous Level Float
- 316 SS
- NBR Float Material
- Mesh Network5 connectivity with long range mesh capable
- Easy installation
- Communicates directly with any LevelCon Gateway

Specifications

Sensing Technology	-	Magnet Field
Operating Voltage	-	0-5v, 240-33 ohm
Current Consumption	-	<5mA
Operating Temperature	-	-40C -> +85C
Output Signal	-	0-5v
Programmable Units	-	Inches of H2O
Accuracy	-	5mm
Housing	-	316 SS
Batteries	-	NA
Process Connection	-	1.5" MNPT
Range	-	0-96"



Key Applications

- Liquid Temperatures
- Vessel Temperatures
- Flow Temperatures
- Wireless Communication
- Multi Temperature point deployment

Contact

- 📍 1125 W. Park One Dr.
Sugar Land, TX 77479
- 📞 972-488-8725
- ✉ Email: sales@levelcon.com
- 🌐 www.levelcon.com